

BLOCK 7 FIVE-ACRE PLAT A PART OF LOTS 25, 26, 27 & 28

TAXING DIST. 25

SCALE 1 INCH = 50 FEET.

BOARD OF EDUCATION OF OGDEN CITY
4.94 AC.
1964 0032

OGDEN CITY FOLLOWS

1964 0033

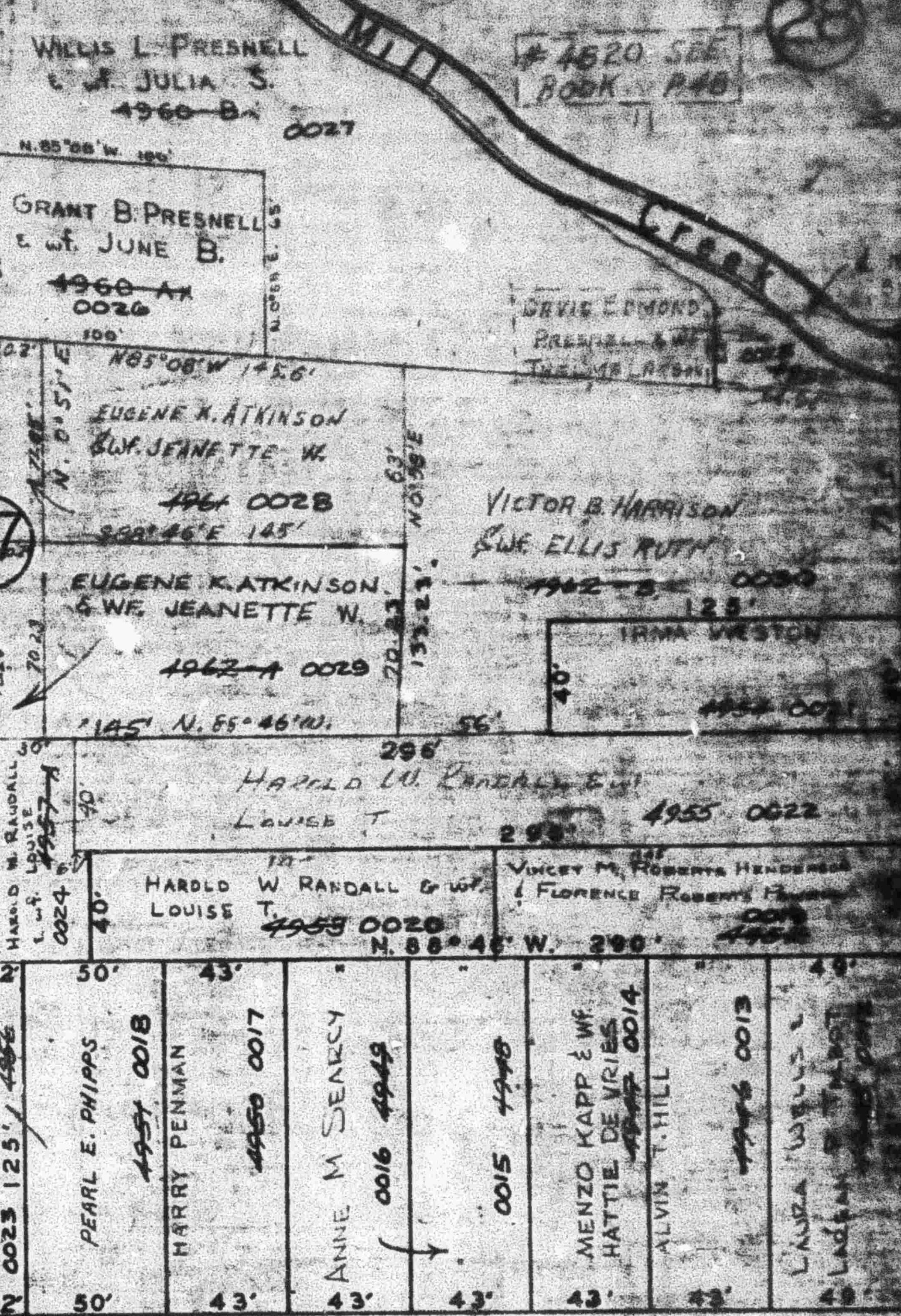
27

N. 0° 58' E.

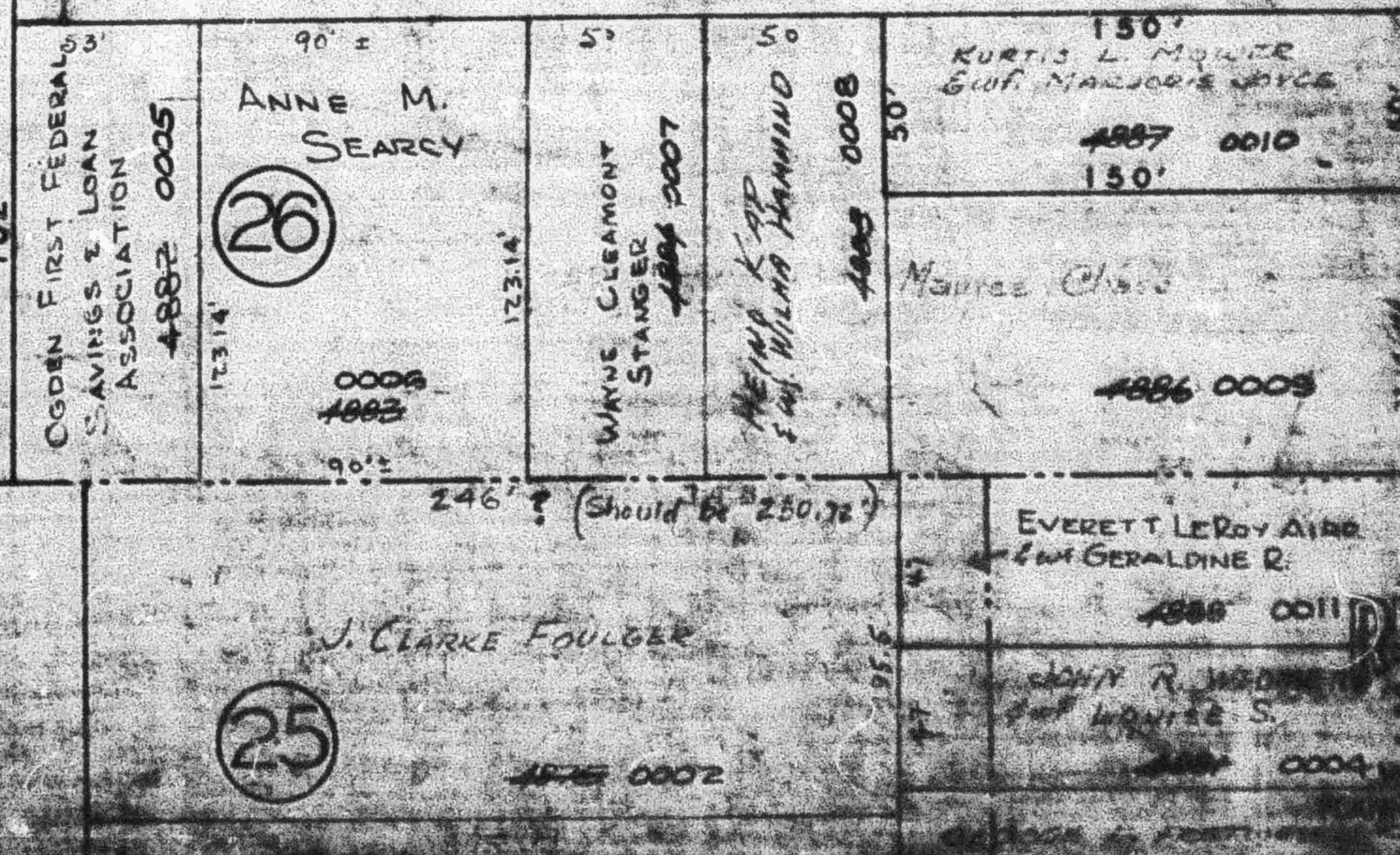
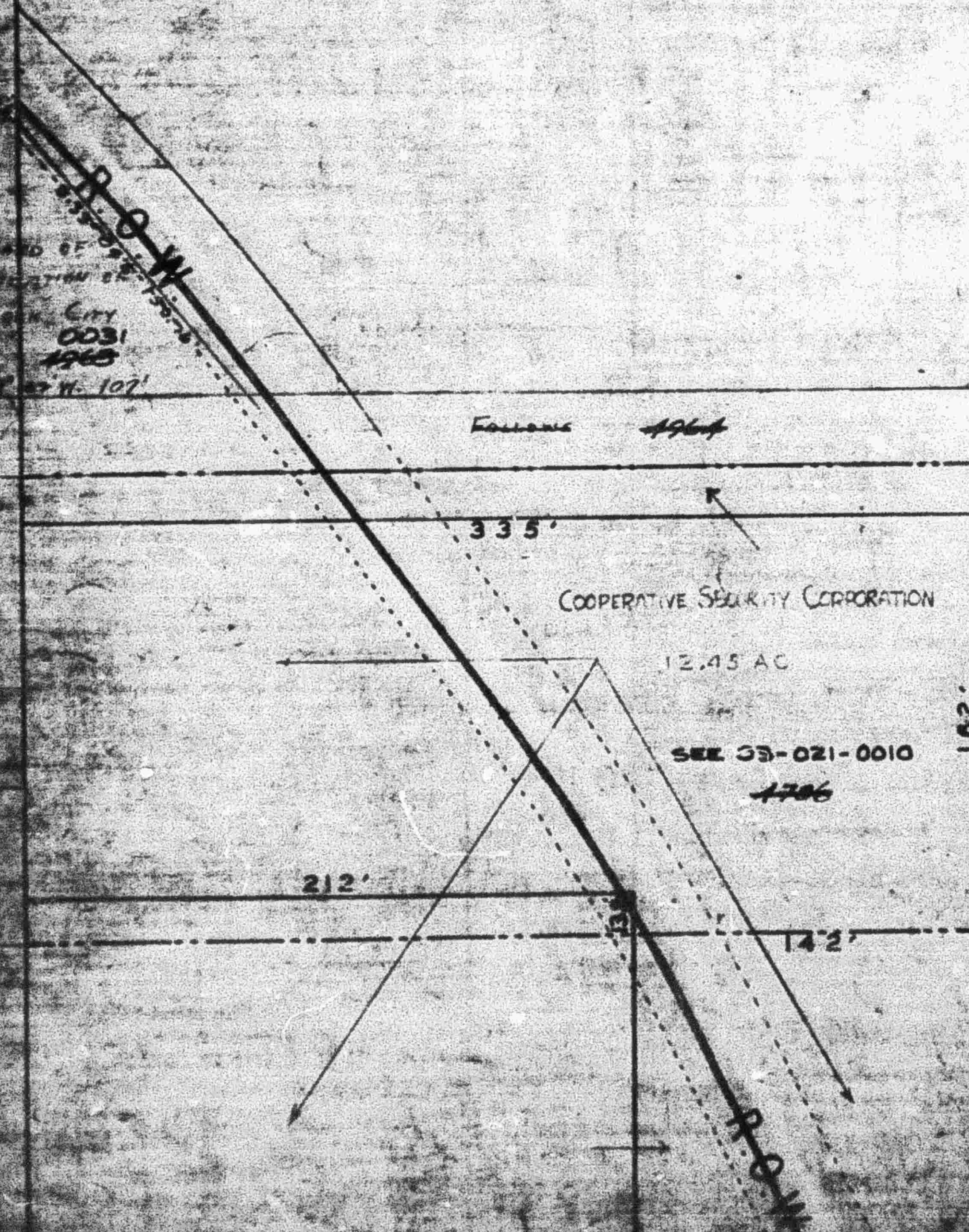
N. 89° 02' W. 51'

162'

25



Fifteenth Street



28

DECEIVED